

9.4 Navigation Styles: SHOWCASE

Navigation Elements, coupled with design logic, produce what we call *Navigation Styles*. Throughout the rest of this chapter, we analyze several important Navigation Styles that together probably will form the bulk of your network's structure. We start with a simple yet highly effective style known as *Showcase*.

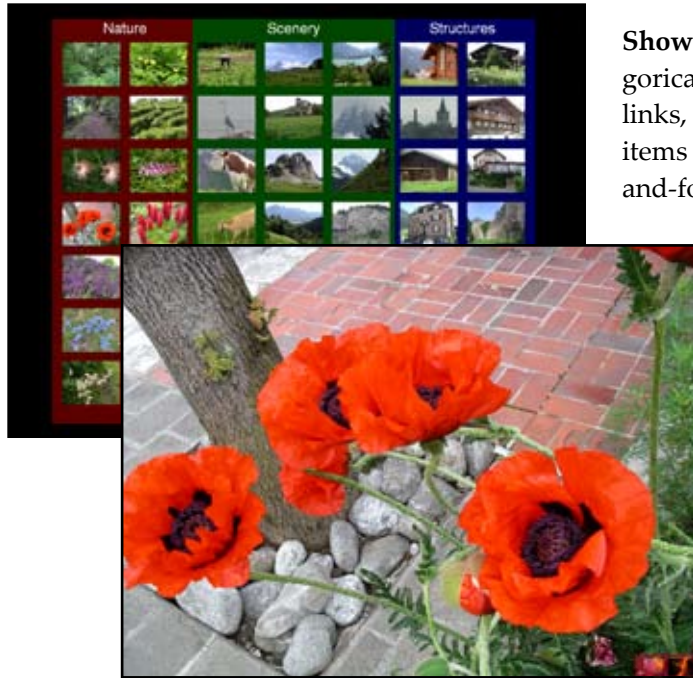


Figure 9.8

Showcase Navigation Style works especially well for categorical collections of content such as pictures, graphs, Web links, quotes, and so forth, where selection of individual items from a larger group is useful. The process is a back-and-forth movement between a switchboard slide that contains the main Navigation Element (normally a block—and usually a thumbnail-based block as shown here) and the content slides. In most cases, Showcase Navigation uses internal hyperlinks, so all associated links are within a single show.

The logic behind Showcase Navigation is very simple. First you build a standard linear slide show filled with content slides (each slide contains its own picture, graph, and so forth). Then you add one additional slide at the beginning of the show to hold the main navigation (switchboard). Each link on the navigation slide accesses a respective content slide and each content slide,

in turn, links back to the navigation slide. That is, you create a loop. Clicking a link on the switchboard takes the presenter to content. Clicking the content transports the presenter back to the switchboard. The loop can be cycled through as many times as desired, viewing any content slide in any order.



Figure 9.9

The slide pictured in the top portion of Figure 9.8 contains 49 thumbnail images. Each thumbnail represents a slide. Therefore, this Showcase presentation contains 50 slides. The first slide holds the thumbnails, and each of the remaining 49 slides features a full-screen picture.

Showcase Style need not be restricted to internal navigation. Our *Navigation Switchboard* shown at left links to numerous short, separate shows. As each show concludes, the presenter is returned to the switchboard for more options.

Exercise A—SHOWCASE Navigation

Building Showcase Navigation is easy. We will now create a simple Showcase Style presentation using the four pictures shown. These pictures are located in your COURSE RESOURCES/Chapter 9 folder—or you may use your own pictures if preferred. Note that a finished version of this exercise is included as well, for comparison. The show you are about to make will have five slides total (one switchboard slide and four content slides).



Figure 9.10

1. Create a new slide show.
2. Add four new slides. You want five slides total.
3. Remove the default text boxes on all the slides by clicking the first slide thumbnail, holding down the **Ctrl** key while pressing the letter **A** to select all slide thumbnails, and then clicking the **blank** option on the **Slide Layout** task pane. (Review Chapter 4 if necessary.)
4. Ignore Slide 1 for the moment. We will come back to it shortly.
5. Click the Slide 2 thumbnail to activate Slide 2.
6. Insert the first picture (green ferns).
7. Click the Slide 3 thumbnail to activate Slide 3.
8. Insert the second picture (blue flowers).
9. Repeat this process for the remaining two slides. You should end up with one picture per slide on Slides 2 through 5.
10. Now return to Slide 1 by clicking the Slide 1 thumbnail.
11. Insert all four pictures at once onto this slide. To do so, make sure to select all four pictures in the **Insert Picture** dialog box before clicking the **Insert** button.
12. After all four pictures are inserted onto Slide 1, downsize the images to 4 inches wide and arrange them as shown above.
13. Right click the green fern picture (now essentially a thumbnail) on Slide 1 and hyperlink it to Slide 2 (the full-size picture).
14. Hyperlink the remaining picture thumbnails to their respective slides.
15. The final step is to hyperlink each full-size picture on Slides 2 through 5 back to Slide 1, completing the loop.
16. When finished linking, start the slide show and test links. You should be able to move back and forth between thumbnails and slides.



Figure 9.11